



DIGITAL

Innovation Experience 2019

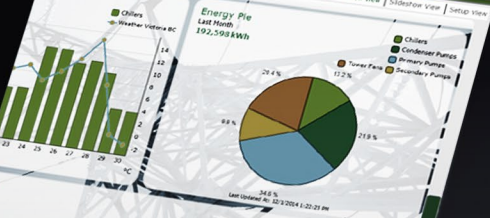
Inspiring your digital transformation in HVAC and Refrigeration

Aurélien Fanget

Marketing Director
Industrial Automation Italy



1141 kW 11.7° 49%rh 10:24 AM



24/7

Simplified machine service & maintenance

Innovation Experience 2019, Venice, September 25th

Presented by: Aurélien Fanget,
Marketing Director Industrial Automation Italy

Four development pillars

More products



More services



More digital solutions



Better systems



Digital transformation brings greater operational efficiency



20–50%
reduction
in time-to-market



45–55%
optimized use of
expertise and
know-how



3–5%
increase in
productivity



30–50%
reduction
of machine downtime

Source: McKinsey, 2016



Smart Maintenance

Speaking about maintenance



The time spent on a maintenance operation in the industry is frequently divided as follows:

50%

*Finding
documentation*

50%

*Fault
resolution*

Augmented Reality allows to optimize both normal and extraordinary routine operations, making them safer and more effective

Requests on Maintenance

The benefit of using A/R



*Reduced machine
downtime*



*Optimization of
average maintenance
time*

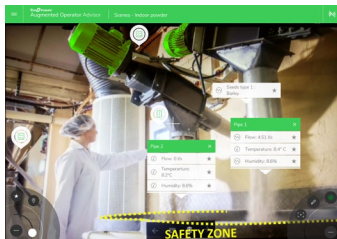


*Decreased
search time
failure*



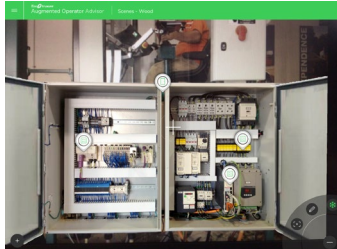
*Guided and
facilitated
intervention*

Different examples of use of Augmented reality



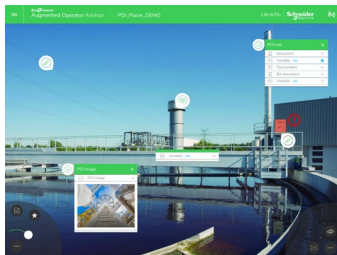
In front of a machine or a production line

Immediate access, in real time, to relevant information in the field for operations and maintenance: machine history, variables of process, documents (products, installations, instructions, electrical diagrams, etc.)



In front of an electrical cabinet or an hidden part of a Machine

Fast diagnosis without lockout or electrical qualifications, through the virtual doors opening the cabinet: device status, variable values (current, power, speed, etc.), documents (products, installations, manuals, electric diagrams, etc.)



For an overall view

Simultaneous view of reality and data. Safe and quick detection of anomalies (alarm display, significant process variables) and access to KPIs (display parameters and key information, production progress, performance indicators, etc.)

EcoStruxure Augmented Operator Advisor

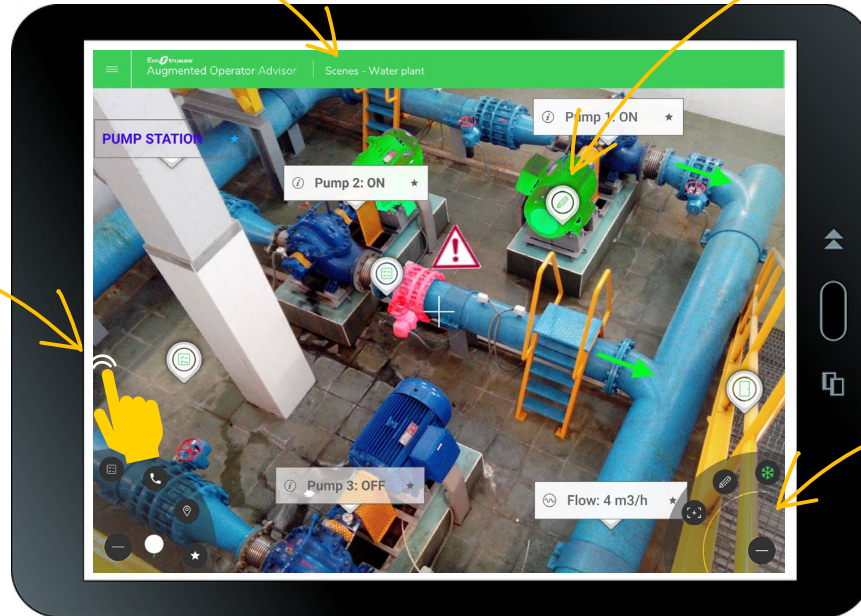
The Schneider Electric answer

Information banner

Point of interest (POI)*

- Global pumps documentations
- Motor datasheet
- Pump datasheet
- Purge the air in the pump

Point of interest List
(up to 5 information)



*POI opportunities: **list** (Label, Images, Process variable, Data from a SQL database, Documents: pdf files, Electrical diagrams, Web pages, Videos), **image**, **variable** or **text** to display directly on the screen

Shortcut menu

eliwell

by Schneider Electric



HVAC



Compressor rack

EcoStruxure[™] for Machines
Innovation At Every Level

Apps,
analytics,
and services



Edge
control



Connected
products



EWCM900
Pro



M172

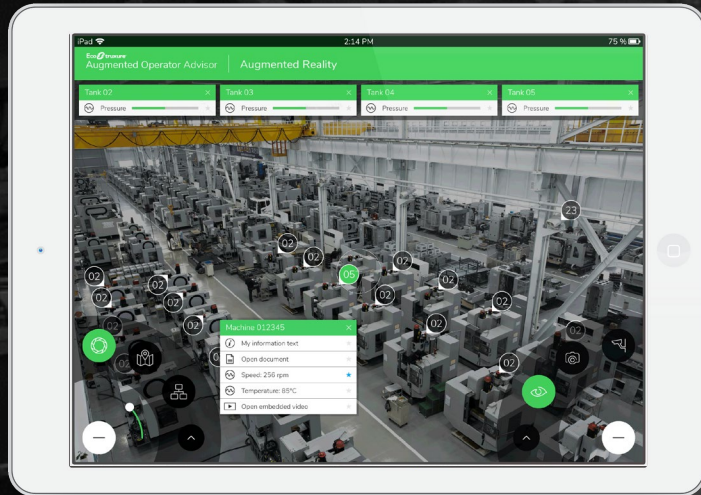
Life Is On

Schneider
Electric

somic

Engineered to perform

EcoStruxure Augmented Operator Advisor



50% increase in speed

40% energy efficiency

“For more than 10 years, Schneider Electric’s integrated servo drives have been the foundation of our modular system and engineering concept.”

Manfred Bonetsmüller, CEO, SOMIC Verpackungsmaschinen, Amerang



Smart services

The four main drivers of digitization in industry



CONNECTIVITY

**IMPROVE THE USE OF
YOUR RESOURCES**



MOBILITY

**BE MORE AGILE AND
MAKE DECISIONS FASTER**



CLOUD

**CREATE NEW DIGITAL
OPPORTUNITIES**



ANALYTICS

IoT is more accessible than we think

~10% of data are utilized today

Unlimited benefits of connecting the connected, from...

reactive to
proactive

onsite to
mobile and remote

site by site to
enterprise

limited to a new scale
of computing
and artificial
intelligence

Benefits of Connected assets and Smart Services

Benefits for OEM

Anytime, anywhere, and unique access to all machine data

Improved customer satisfaction through better and faster service

Differentiation by offering new services and platform with my machines

Higher machine availability thanks to analytics

Benefits for End User

Faster service, reduced machine downtimes and improved performance

Better tracing of operations and activities performed on their machine

One click Access to documentation, important data and support experts

Planned maintenance operations and improved maintenance quality

EcoStruxure Machine Advisor

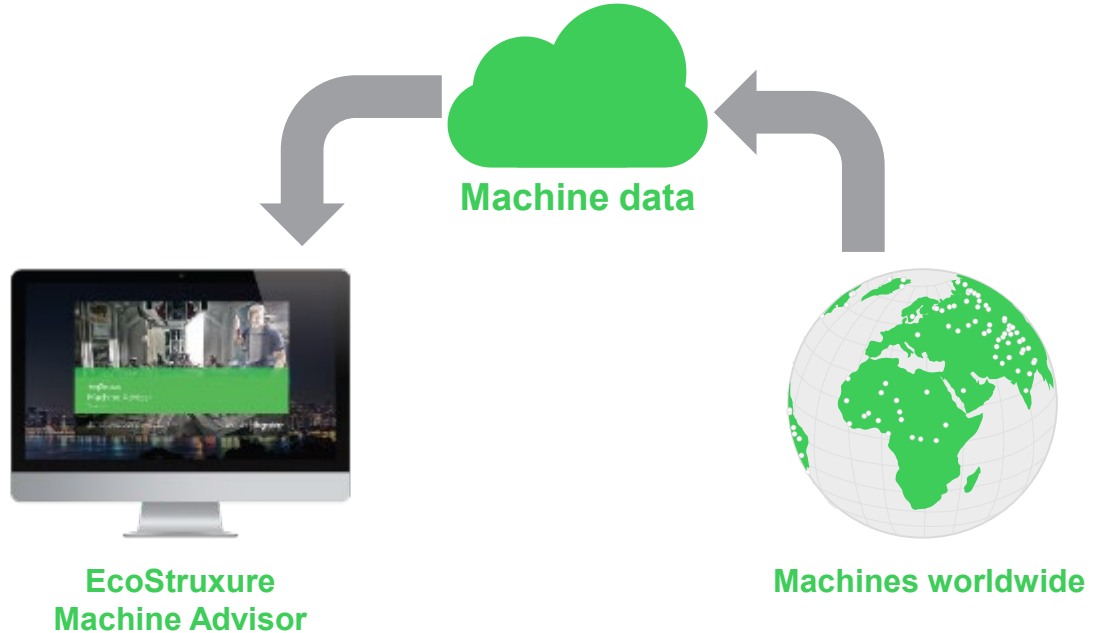
The Schneider Electric answer

EcoStruxure Machine Advisor is the new digital cloud-based services platform.

It enables machine builders to provide new services to machine operators for each installed machine in any production site worldwide.

The Machine builder can support now the machine operator by creating optimum framework conditions for a perfect and reliable operation of machines.

Machine Advisor offers a service to evaluate the asset's health and to give access to the machine performance.



Smart services

EcoStruxure Machine Advisor – Overview

The 'Track' interface displays a detailed architecture diagram of a machine, showing various components and their interconnections. Below the diagram, there is a 'TASKS MANAGEMENT' section with a table of tasks:

TASK TITLE	DESCRIPTION	DUE DATE
Empty water bottle	Empty the water bottle behind the machine	Set execution date: 1/15/2018
Change the cups	Make a check to the quality of cups and replace change it	Set execution date

The 'DOCUMENTATION' section includes a list of manuals and logs, such as 'Bill of Materials', 'Maintenance Log', and 'Performance Log'.

Track

Track is a repository service to get access to the machine's documentation and history: e.g. bill of materials, manuals, maintenance log, and task management.

The 'Monitor' interface provides a comprehensive overview of machine performance. Key metrics include:

- DTAddr_112 (GAUGE):** 62.6
- OEE MACARONS HISTORY (TREND):** A line chart showing historical performance over time.
- Performance (GAUGE):** 72%
- MACARONS - AVAILABILITY (DOUGHNUT):** A donut chart showing availability metrics.
- MACARONS - QUALITY (DOUGHNUT):** A donut chart showing quality metrics.

Monitor

Monitor is a cloud based service to evaluate asset's health and to give access to the machine performance data (KPIs, dashboards), sending notifications and alerts in case of need.

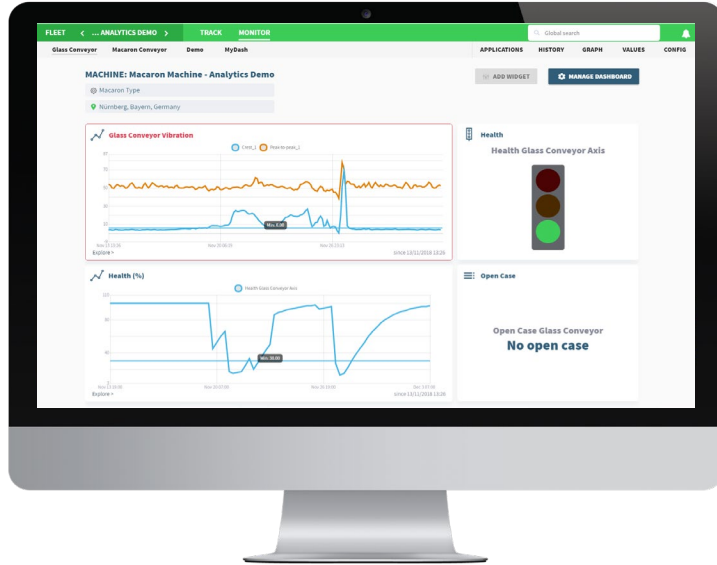
The 'Fix' interface is designed to assist with machine maintenance. It features a section for 'Augmented Operator Advisor' which includes a video player showing a technician using AR to assist with machine maintenance. The video shows a technician interacting with a machine, with AR overlays providing step-by-step instructions and remote expert assistance.

Fix

Fix is a service to facilitate maintenance operations with the help of step-by-step procedures and remote experts leveraging augmented reality.

Smart services

EcoStruxure Machine Advisor – Monitor – Health Application



Machine Monitoring – Health Application

Increases the machine availability thanks to anomaly detection by analytics

Inputs up to 10 machine parameters according to your pain points to the Health algorithm e.g. pressure, temperature, speed, current ...

The algorithm will be teached for a certain time with “good data” to make the algorithm aware of the normal production conditions.

As an output you will get the health status and an alert, if there are anomalies in the data.

Gives notification in case of asset anomaly detection

You will get notified about asset health cases via email, to react and keep the machine running.

Learn more on the subject

Today and tomorrow:

- At the Innovation Hub, live demo of **EcoStruxure Augmented Operator & EcoStruxure Machine Advisor**
- In the **EcoStruxure Machine Advisor** workshop

Checking **EcoStruxure Augmented Operator** use case and customers stories, using the links →

of maintenance & services

