

# FREE Studio Plus

## Release Notes

9MA10300.06

02/2023 v1.5.1



[www.eliwell.com](http://www.eliwell.com)

**eliwell**  
by **Schneider** Electric

## Legal Information

The Schneider Electric brand and any trademarks of Schneider Electric SE and its subsidiaries referred to in this guide are the property of Schneider Electric SE or its subsidiaries. All other brands may be trademarks of their respective owners.

This guide and its content are protected under applicable copyright laws and furnished for informational use only. No part of this guide may be reproduced or transmitted in any form or by any means (electronic, mechanical, photocopying, recording, or otherwise), for any purpose, without the prior written permission of Schneider Electric.

Schneider Electric does not grant any right or license for commercial use of the guide or its content, except for a non-exclusive and personal license to consult it on an "as is" basis. Schneider Electric products and equipment should be installed, operated, serviced, and maintained only by qualified personnel.

As standards, specifications, and designs change from time to time, information contained in this guide may be subject to change without notice.

To the extent permitted by applicable law, no responsibility or liability is assumed by Schneider Electric and its subsidiaries for any errors or omissions in the informational content of this material or consequences arising out of or resulting from the use of the information contained herein.

As part of a group of responsible, inclusive companies, we are updating our communications that contain non-inclusive terminology. Until we complete this process, however, our content may still contain standardized industry terms that may be deemed inappropriate by our customers.

© 2023 Eliwell. All Rights Reserved.

## About the Book

Schneider Electric technical manuals must follow a common look for both internal and external customers and provide consistent and recognizable content. Manuals must be produced in A4, letter, hybrid, half-legal or A5 page for output sizing. This document focuses on output to PDF or printed material.

## At a Glance

### Document Scope

This document contains important information about the hardware/firmware/software delivery of product FREE Studio Plus. Read the complete document before you use the product or products described herein.

### Validity Note

The information in this Release Notes document is applicable only for FREE Studio Plus compatible products. This document has been updated for the release of FREE Studio Plus V1.5.1.

The technical characteristics of the devices described in this document also appear online. To access this information online go to the Eliwell home page <https://www.eliwell.com/>.

The characteristics that are presented in the present document should be the same as those characteristics that appear online. In line with our policy of constant improvement, we may revise content over time to improve clarity and accuracy. If you see a difference between the document and online information, use the online information as your reference.

# Safety Information

## Important Information

Read these instructions carefully and look at the equipment to become familiar with the device before trying to install, operate, service, or maintain it. The following special messages may appear throughout this manual or on the equipment to warn of potential hazards or to call attention to information that clarifies or simplifies a procedure.



The addition of either symbol to a “Danger” or “Warning” safety label indicates that an electrical hazard exists which will result in personal injury if the instructions are not followed.



This is the safety alert symbol. It is used to alert you to potential personal injury hazards. Obey all safety messages that follow this symbol to avoid possible injury or death.

### **DANGER**

**DANGER** indicates a hazardous situation which, if not avoided, **will result in** death or serious injury.

### **WARNING**

**WARNING** indicates a hazardous situation which, if not avoided, **could result in** death or serious injury.

### **CAUTION**

**CAUTION** indicates a hazardous situation which, if not avoided, **could result in** minor or moderate injury.

### **NOTICE**

**NOTICE** is used to address practices not related to physical injury.

# Table of Contents

|   |    |
|---|----|
| At a Glance .....                                   | 3  |
| Product Information .....                           | 6  |
| Overview .....                                      | 6  |
| Product Identification .....                        | 6  |
| Release History .....                               | 7  |
| System Requirements .....                           | 7  |
| Compatibility .....                                 | 7  |
| Installation Instructions .....                     | 7  |
| Installer Access Level .....                        | 8  |
| Hardware / Firmware Information.....                | 10 |
| New Features .....                                  | 10 |
| Mitigated Anomalies .....                           | 18 |
| Firmware downgrade .....                            | 21 |
| Software Information .....                          | 22 |
| New Features .....                                  | 22 |
| Mitigated Anomalies .....                           | 24 |
| Known Operational Anomalies .....                   | 26 |
| Additional Information .....                        | 27 |
| Release Notes History .....                         | 27 |
| New Features Hardware/Firmware v1.4.1.0.....        | 27 |
| Mitigated Anomalies Hardware/Firmware v1.4.1.0..... | 27 |
| New Hardware/Firmware v1.4.0 Features.....          | 27 |
| Mitigated Anomalies Hardware/Firmware v1.4.0.....   | 28 |
| New Hardware/Firmware v1.3.0 Features.....          | 29 |
| Mitigated Anomalies Hardware/Firmware v1.3.0.....   | 30 |
| New Features Hardware/Firmware v1.2.1.....          | 31 |
| Mitigated Anomalies Hardware/Firmware v1.2.1.....   | 32 |
| New Features Hardware/Firmware v1.1.....            | 32 |
| Mitigated Anomalies Hardware/Firmware v1.1.....     | 32 |
| New Features Software v1.4.1.0 .....                | 33 |
| Mitigated Anomalies Software v1.4.1.0 .....         | 33 |
| Known Operational Anomalies v1.4.1.0 .....          | 33 |
| New Features Software v1.4.0 .....                  | 33 |
| Mitigated Anomalies Software v1.4.0 .....           | 34 |
| New Features Software v1.3.0 .....                  | 35 |
| Mitigated Anomalies Software v1.3.0 .....           | 36 |
| New Features Software v1.2.1 .....                  | 37 |
| Mitigated Anomalies Software v1.2.1 .....           | 37 |
| New Features Software v1.1 .....                    | 38 |
| Mitigated Anomalies Software v1.1 .....             | 38 |
| Known Operational Anomalies v1.1 .....              | 38 |

# Product Information

## Overview

Maintenance release of FREE Studio Plus, with implementation of new features and bug fixing

## Product Identification

| Reference                                  | Description  | Version                                      | Note        |
|--|--|--|-------------|
| AVS00PI070500                              | FREE Advance Secure interface Plug-in  | Firmware msk:<br>815.03                      | NEW PRODUCT |
| AVS00GW080500                              | FREE Advance Secure interface Gateway  | Firmware msk:<br>816.03                      |             |
| EPB●●FCTA500                               | EWCM 9000 PRO (HF) Logic Controller 42 I/OS  | Firmware msk:<br>644.06                      | updated     |
| EVEVD1U000500                              | EEVD Expansion1 EEV Unipolar   | Firmware msk:<br>772.01                      | updated     |
| EVEVD●B000500                              | EEVD Expansion1 or 2 EEV Bipolar   | Firmware msk:<br>766.01                      | updated     |
| EVD75●●                                    | FREE Evolution Logic Controllers 27 I/OS   | Firmware msk:<br>423.29                      | updated     |
| EVC75●●                                    | FREE Evolution Performance Logic Controllers 27 I/OS   | Firmware msk:<br>477.29                      | updated     |
| EVE7500                                    | FREE Evolution Expansion 27 I/Os   | Firmware msk:<br>460.04                      | updated     |
| EVP3●●                                     | FREE Panel Flush mounting Controllers  | Firmware msk:<br>489.23                      | updated     |
| EVK1000                                    | Remote Display HMI   | Firmware msk:<br>476.23                      | updated     |
| AVK1000                                    | Remote Display HMI   |  | updated     |
| AVD126●●/<br>AVC126●●/<br>AVD84●●/ AVC84●● | FREE Advance Logic Controllers 28 and 42 I/OS  | Firmware msk:<br>596.13                      | updated     |
| AVD62●●/<br>AVC62●●/<br>AVD30●●/ AVC30●●   | FREE Advance Logic Controllers 7 and 18 I/Os   | Firmware msk:<br>668.13                      | updated     |
| AVP1●●●                                    | FREE AVP1000 Display Color TouchScreen, Temperature (Humidity) built-in sensor(s)<br>FREE AVP1000 Display Color TouchScreen Flush Mounting | Firmware msk:<br>659.09                      | updated     |
| SM●●●●●                                    | FREE Smart Logic Controllers   | Firmware msk:<br>542.10                      | NOT updated |
| SM●●●●●                                    | FREE Smart Logic Controllers   | Firmware msk:<br>412.21                      | NOT updated |
| EVE6000/EVE10200                           | FREE Advance Expansion 12 and 28 I/Os  | Firmware msk:<br>640.04                      | NOT updated |
| XVD  | XVD EEV Driver   | Firmware msk:<br>497.13 (obsolete)<br>589.20 | NOT updated |

## Release History

| Version | Release Date     | Description              |
|---------|------------------|--------------------------|
| 1.5.1   | February 2023    | FREE Studio Plus 1.5.1   |
| 1.4.1.0 | May 2022<br>2021 | FREE Studio Plus 1.4.1.0 |
| 1.4.0   | July 2021        | FREE Studio Plus 1.4.0   |
| 1.3.0   | January 2021     | FREE Studio Plus 1.3.0   |
| 1.2.1   | May 2020         | FREE Studio Plus 1.2.1   |
| 1.2     | March 2020       | FREE Studio Plus 1.2     |
| 1.1     | June 2019        | FREE Studio Plus 1.1     |
| 1.0     | October 2018     | FREE Studio Plus 1.0     |

## System Requirements

FREE Studio Plus can be installed on a personal computer having the following characteristics:

### Operative System

- Windows 8 / 8.1 64 Bit
- Windows 10 64 Bit

### Hardware requirements

- Processor Intel Pentium 1.6 GHz processor or greater
- RAM 1 GB; 2 GB preferred
- Hard Disk 1 GB hard disk space
- Peripherals Mouse or compatible pointing device
- Peripherals USB interface
- Web access Web registration requires Internet access

FREE Studio Plus requires Administrator rights to be installed.

For further information, contact your local Eliwell representative.

## Compatibility

All FREE Logic Controllers

EWCM 9000 Pro controller

## Installation Instructions

FREE Studio Plus software can be downloaded from our website  
<https://www.eliwell.com>

The product version concerned offers the FREE Studio Plus functions associated with logic controllers.

Follow setup wizard and refer to FREE Studio Plus Operating Guide

## Installer Access Level

A stand-alone software, Installer software, is delivered in addition with FREE Studio Plus.

Visibility of resources can be set by the developer in FREE Studio Plus and managed by the user in FREE Studio Plus Installer

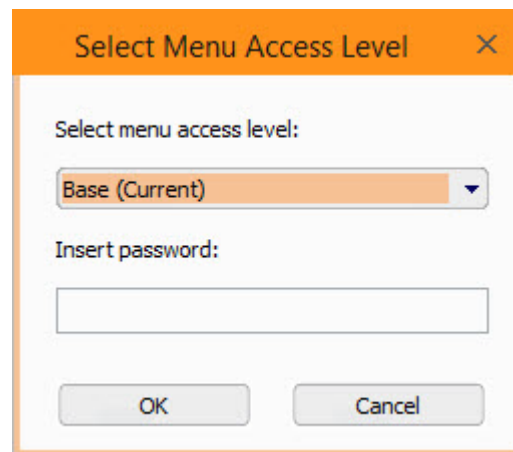
From the File menu you can change the Menu Access Level:

### Change Menu Access Level

The Menu Access Levels are:

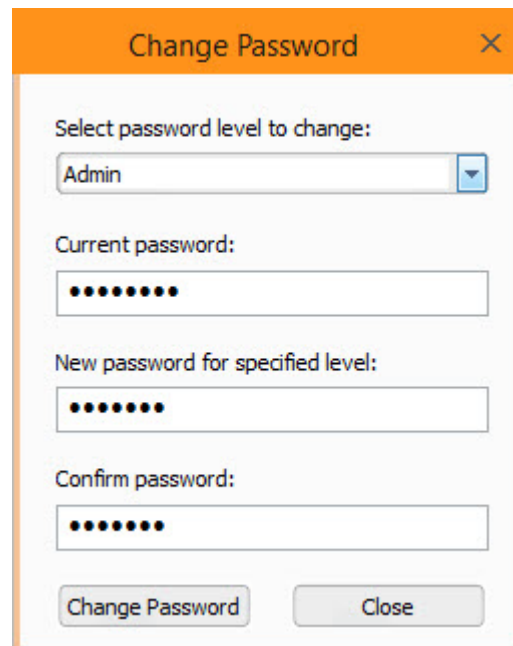
- Base
- Supervisor
- Admin

As soon as you have changed the Access level chosen will become (Current)



### Change Menu Access Level Password

From the File menu change the Menu Access Level Password the first time you use it:



By default, the passwords are:



Base = no password  
 Supervisor = "service"  
 Admin = "administrator"

## Replace the preset password

Change the preset password the first time you use it. You should also carefully consider the implications of allowing other people to access it.

### **NOTICE**

#### **UNAUTHORIZED ACCESS TO DATA**

- Immediately change the preset password with a secure new password.
- Do not communicate the password to unauthorized or otherwise unqualified personnel.

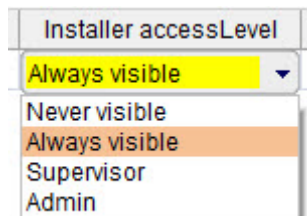
**Failure to follow these instructions can result in equipment damage.**

NOTE: a secure password is a password which has not been shared or circulated amongst unauthorized personnel and which does not contain personal or obvious information. Furthermore, a combination of upper-case and lower-case letters and numbers offers greater security. Choose a password that is at least five characters long.

## Visibility of menu resources

You can set the visibility of Parameters and variables from FREE Studio Plus Configuration tab.

The visibility of the resources created by the developer is indicated below:



- Never visible = resources created in Configuration will not be visible in FREE Studio Installer
- Always visible = resources created in Configuration will always be visible in FREE Studio Installer with "Base" rights
- Supervisor = resources created in Configuration will be visible in FREE Studio Installer with "Supervisor" password rights
- Admin = resources created in Configuration will be visible in FREE Studio Installer with "Admin" rights

# Hardware / Firmware Information

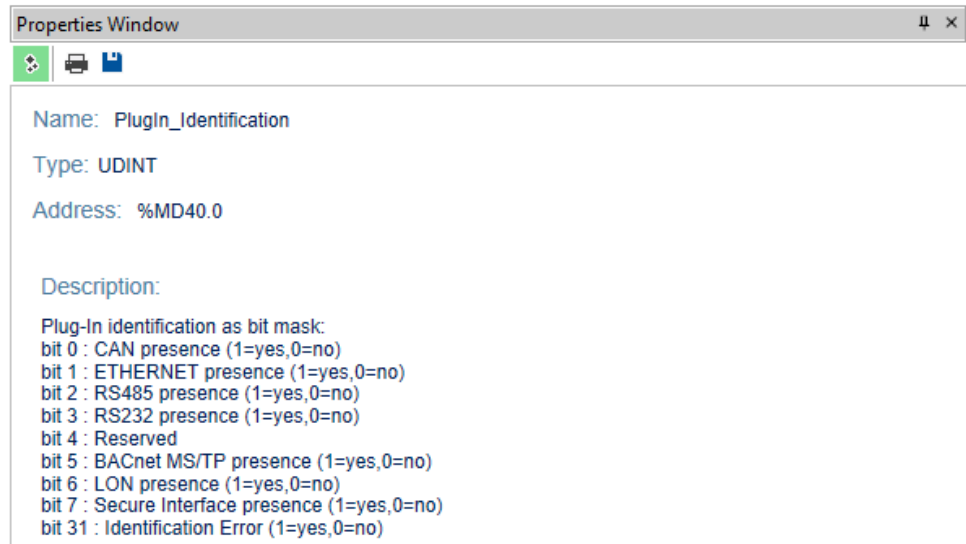
## New Features

NEW PRODUCT AVS00PI070500/ AVS00GW080500 (FIRMWARE MSK 815.02 AND MSK 816.02)

- AVS00PI070500 can be recognized as PlugIn by FREE Advance Logic Controller starting from firmware MSK 596.13 and MSK 668.13

NEW FEATURES IN AVD126●●, AVC126●●, AVD84●●, AVC84●●/ AVD62●●, AVC62●●, AVD30●●, AVC30●● (FIRMWARE MSK 596.13 AND MSK 668.13)

- Added capability to recognize AVS00PI070500 (FREE Advance Secure Interface PlugIn) as PlugIn. Added bit 7 in PlugIn \_Identification Target Variables too



- Bridge function: added support to Modbus Messages 1 (Read Coils) ,2 (Read Discrete Inputs) ,4 (Read Input Registers),15 (Write Multiple Coils). The maximum number of consecutive Registers/Inputs/Coils which can be read/write is limited to 20 (as for Modbus Message 3,16 already available).
- Added Modbus TCP Client at event in IEC61131-3 programming.

Modbus TCP Client functions can be used only if Client(for field)/Server is enabled in the Ethernet Configuration Node (Configuration Perspective). This means that MbMTcp\_OpenChn and MbMTcp\_Start functions must be present in the CONNEC.PAR loaded by the controller.

These functions can work together with Modbus TCP Client nodes defined in the Configuration Perspective (listed in the CONNEC.PAR). They can also send messages to servers with IP address not defined in the Ethernet Configuration: in this case connection is opened when sending and then closing at receiving the response, but the maximum number of servers defined in Configuration is limited to 7 instead of 8.

UnitID used by the Modbus TCP Client functions can be changed runtime.

The maximum number of consecutive Registers/Inputs/Coils which can be read/written is limited to 20.

Here below the added embedded functions:

### sysMbMTCP\_FC01

**Function: sysMbMTCP\_FC01** (ver.1.0.0, EMBEDDED )  
 Creation date: ...  
 Last modified date: ...

Return Value: UINT

Input:

| Name    | Type  | Description                                |
|---------|-------|--|
| ip      | @BYTE | Ip address of the target server            |
| unitID  | USINT | UnitID of the target server                |
| base    | UINT  | Address of the first coil to read          |
| no      | UINT  | Number of contiguous coils to read [1..20] |
| object  | @BOOL | Coils array pointer                        |
| timeout | UINT  | Timeout [ms]                               |

Description:

Send 0x01 command.

The function returns a UINT which could have the following meanings:

- 0 = No error occurred
- 1 = Exception code Illegal function
- 2 = Exception code Illegal data address
- 3 = Exception code Illegal data value
- 4 = Exception code Slave device failure
- 5 = Exception code Acknowledge
- 6 = Exception code Slave device busy
- 7 = Exception code Memory parity error
- 8 = Communication channel configuration error
- 10 = Exception code Gateway path unavailable
- 11 = Exception code Gateway target device failed to respond
- 14 = Invalid response message
- 16 = Timeout reached
- 17 = Function not executed due to try to call it in Timed
- 18 = Number of object out of range
- 20 = Function not executed because Address of the first coil to read must be greater then 0

### sysMbMTCP\_FC02

**Function: sysMbMTCP\_FC02** (ver.1.0.0, EMBEDDED )  
 Creation date: ...  
 Last modified date: ...

Return Value: UINT

Input:

| Name    | Type  | Description                                 |
|---------|-------|---|
| ip      | @BYTE | Ip address of the target server             |
| unitID  | USINT | UnitID of the target server                 |
| base    | UINT  | Address of the first Input to read          |
| no      | UINT  | Number of contiguous Inputs to read [1..20] |
| object  | @BOOL | Discrete Inputs array pointer               |
| timeout | UINT  | Timeout [ms]                                |

Description:

Send 0x02 command.

The function returns a UINT which could have the following meanings:

- 0 = No error occurred
- 1 = Exception code Illegal function
- 2 = Exception code Illegal data address
- 3 = Exception code Illegal data value
- 4 = Exception code Slave device failure
- 5 = Exception code Acknowledge
- 6 = Exception code Slave device busy
- 7 = Exception code Memory parity error
- 8 = Communication channel configuration error
- 10 = Exception code Gateway path unavailable
- 11 = Exception code Gateway target device failed to respond
- 14 = Invalid response message
- 16 = Timeout reached
- 17 = Function not executed due to try to call it in Timed
- 18 = Number of object out of range
- 20 = Function not executed because Address of the first Input to read must be greater then 0

### sysMbMTCP\_FC03

**Function: sysMbMTCP\_FC03** (ver. 1.0.0, EMBEDDED )  
 Creation date: ...  
 Last modified date: ...

Return Value: UINT

Input:

| Name    | Type  | Description  |
|---------|-------|--|
| ip      | @BYTE | Ip address of the target server                        |
| unitID  | USINT | UnitID of the target server                            |
| base    | UINT  | Address of the first Holding Register to read          |
| no      | UINT  | Number of contiguous Holding Registers to read [1..20] |
| object  | @UINT | Holding Register array pointer                         |
| timeout | UINT  | Timeout [ms]   |

Description:

Send 0x03 command.

The function returns a UINT which could have the following meanings:

- 0 = No error occurred
- 1 = Exception code Illegal function
- 2 = Exception code Illegal data address
- 3 = Exception code Illegal data value
- 4 = Exception code Slave device failure
- 5 = Exception code Acknowledge
- 6 = Exception code Slave device busy
- 7 = Exception code Memory parity error
- 8 = Communication channel configuration error
- 10 = Exception code Gateway path unavailable
- 11 = Exception code Gateway target device failed to respond
- 14 = Invalid response message
- 16 = Timeout reached
- 17 = Function not executed due to try to call it in Timed
- 18 = Number of object out of range
- 20 = Function not executed because Address of the first Holding Register to read must be greater then 0

### sysMbMTCP\_FC04

**Function: sysMbMTCP\_FC04** (ver. 1.0.0, EMBEDDED )  
 Creation date: ...  
 Last modified date: ...

Return Value: UINT

Input:

| Name    | Type  | Description  |
|---------|-------|--|
| ip      | @BYTE | Ip address of the target server                      |
| unitID  | USINT | UnitID of the target server                          |
| base    | UINT  | Address of the first Input Register to read          |
| no      | UINT  | Number of contiguous Input Registers to read [1..20] |
| object  | @UINT | Input Register array pointer                         |
| timeout | UINT  | Timeout [ms]   |

Description:

Send 0x04 command.

The function returns a UINT which could have the following meanings:

- 0 = No error occurred
- 1 = Exception code Illegal function
- 2 = Exception code Illegal data address
- 3 = Exception code Illegal data value
- 4 = Exception code Slave device failure
- 5 = Exception code Acknowledge
- 6 = Exception code Slave device busy
- 7 = Exception code Memory parity error
- 8 = Communication channel configuration error
- 10 = Exception code Gateway path unavailable
- 11 = Exception code Gateway target device failed to respond
- 14 = Invalid response message
- 16 = Timeout reached
- 17 = Function not executed due to try to call it in Timed
- 18 = Number of object out of range
- 20 = Function not executed because Address of the first Input Register to read must be greater then 0

### sysMbMTCP\_FC05

Function: sysMbMTCP\_FC05 (ver.1.0.0, EMBEDDED )  
 Creation date: ...  
 Last modified date: ...

Return Value: UINT

Input:

| Name    | Type  | Description                     |
|---------|-------|---------------------------------|
| ip      | @BYTE | Ip address of the target server |
| unitID  | USINT | UnitID of the target server     |
| base    | UINT  | Address of the coil to write    |
| object  | @BOOL | Coil pointer                    |
| timeout | UINT  | Timeout [ms]                    |

Description:

Send 0x05 command.

The function returns a UINT which could have the following meanings:

- 0 = No error occurred
- 1 = Exception code Illegal function
- 2 = Exception code Illegal data address
- 3 = Exception code Illegal data value
- 4 = Exception code Slave device failure
- 5 = Exception code Acknowledge
- 6 = Exception code Slave device busy
- 7 = Exception code Memory parity error
- 8 = Communication channel configuration error
- 10 = Exception code Gateway path unavailable
- 11 = Exception code Gateway target device failed to respond
- 14 = Invalid response message
- 16 = Timeout reached
- 17 = Function not executed due to try to call it in Timed
- 20 = Function not executed because Address of the coil to write must be greater then 0

### sysMbMTCP\_FC06

Function: sysMbMTCP\_FC06 (ver.1.0.0, EMBEDDED )  
 Creation date: ...  
 Last modified date: ...

Return Value: UINT

Input:

| Name    | Type  | Description                      |
|---------|-------|----------------------------------|
| ip      | @BYTE | Ip address of the target server  |
| unitID  | USINT | UnitID of the target server      |
| base    | UINT  | Address of the Register to write |
| object  | @INT  | Register pointer                 |
| timeout | UINT  | Timeout [ms]                     |

Description:

Send 0x06 command.

The function returns a UINT which could have the following meanings:

- 0 = No error occurred
- 1 = Exception code Illegal function
- 2 = Exception code Illegal data address
- 3 = Exception code Illegal data value
- 4 = Exception code Slave device failure
- 5 = Exception code Acknowledge
- 6 = Exception code Slave device busy
- 7 = Exception code Memory parity error
- 8 = Communication channel configuration error
- 10 = Exception code Gateway path unavailable
- 11 = Exception code Gateway target device failed to respond
- 14 = Invalid response message
- 16 = Timeout reached
- 17 = Function not executed due to try to call it in Timed
- 20 = Function not executed because Address of the Register to write must be greater then 0

### sysMbMTCP\_FC15

Function: **sysMbMTCP\_FC15** (ver.1.0.0, EMBEDDED )  
 Creation date: ...  
 Last modified date: ...

Return Value: **UINT**

Input:

| Name    | Type  | Description                                 |
|---------|-------|---|
| ip      | @BYTE | Ip address of the target server             |
| unitID  | USINT | UnitID of the target server                 |
| base    | UINT  | Address of the first Coil to write          |
| no      | UINT  | Number of contiguous Coils to write [1..20] |
| object  | @BOOL | Coils array pointer                         |
| timeout | UINT  | Timeout [ms]                                |

Description:

Send 0x0F command.

The function returns a **UINT** which could have the following meanings:

- 0 = No error occurred
- 1 = Exception code Illegal function
- 2 = Exception code Illegal data address
- 3 = Exception code Illegal data value
- 4 = Exception code Slave device failure
- 5 = Exception code Acknowledge
- 6 = Exception code Slave device busy
- 7 = Exception code Memory parity error
- 8 = Communication channel configuration error
- 10 = Exception code Gateway path unavailable
- 11 = Exception code Gateway target device failed to respond
- 14 = Invalid response message
- 16 = Timeout reached
- 17 = Function not executed due to try to call it in Timed
- 18 = Number of object out of range
- 20 = Function not executed because Address of the first Coil to write must be greater then 0

### sysMbMTCP\_FC16

Function: **sysMbMTCP\_FC16** (ver.1.0.0, EMBEDDED )  
 Creation date: ...  
 Last modified date: ...

Return Value: **UINT**

Input:

| Name    | Type  | Description   |
|---------|-------|---|
| ip      | @BYTE | Ip address of the target server                         |
| unitID  | USINT | UnitID of the target server                             |
| base    | UINT  | Address of the first Holding Register to write          |
| no      | UINT  | Number of contiguous Holding Registers to write [1..20] |
| object  | @INT  | Holding Register array pointer                          |
| timeout | UINT  | Timeout [ms]  |

Description:

Send 0x10 command.

- 0 = No error occurred
- 1 = Exception code Illegal function
- 2 = Exception code Illegal data address
- 3 = Exception code Illegal data value
- 4 = Exception code Slave device failure
- 5 = Exception code Acknowledge
- 6 = Exception code Slave device busy
- 7 = Exception code Memory parity error
- 8 = Communication channel configuration error
- 10 = Exception code Gateway path unavailable
- 11 = Exception code Gateway target device failed to respond
- 14 = Invalid response message
- 16 = Timeout reached
- 17 = Function not executed due to try to call it in Timed
- 18 = Number of object out of range
- 20 = Function not executed because Address of the first Holding Register to write must be greater then 0

- IP settings by parameter of the Modbus/TCP Server nodes defined in the Configuration Perspective.

Introduced new BIOS parameters:

16146 MbMTcp\_ServerIp4thOctet\_Node0

...

16153 MbMTcp\_ServerIp4thOctet\_Node7.

Here below the rules to fill the field "IP address:" of a Modbus/TCP server node:

<ip1>, <ip2>, <ip3>, <ip4>

Which results in the following function in CONNEC.PAR:

MbMTcp\_SlaveAssign,<node>, <ip1>, <ip2>, <ip3>, <ip4>

- <node> : field “Node number” defined in the Client node
- <ip1> : if ip1 is equal to 15798 then ip1 is loaded with the value of ip\_1\_ETH\_PI parameter else it maintains its value (the one written in the file)
- <ip2> : if ip2 is equal to 15799 then ip2 is loaded with the value of ip\_2\_ETH\_PI parameter else it maintains its value (the one wrote in the file)
- <ip3> : if ip3 is equal to 15800 then ip3 is loaded with the value of ip\_3\_ETH\_PI parameter else it maintains its value (the one wrote in the file)
- <ip4> : if ip4 is equal or great than 16146 and equal or less than 16153 then ip4 is loaded with the value of the BIOS parameter that has that Modbus address otherwise it maintains its value (the one wrote in the file)

A PLC reboot is required to update the IP settings of the Server Nodes.

Below the new parameters in BIOS parameters\All parameters\Ethernet folder

| Address | Name                          | Value | Unit | Default | Min | Max | Description   |
|---------|-------------------------------|-------|------|---------|-----|-----|---|
| 15800   | ip_3_ETH_PI                   | 0     | num  | 0       | 0   | 255 | Ethernet IP address (3 rd part)   |
| 15801   | ip_4_ETH_PI                   | 100   | num  | 100     | 0   | 255 | Ethernet IP address (4 th part)   |
| 15802   | DefGw_1_ETH_PI                | 10    | num  | 10      | 0   | 255 | Default Gateway (1 st part)   |
| 15803   | DefGw_2_ETH_PI                | 0     | num  | 0       | 0   | 255 | Default Gateway (2 nd part)   |
| 15804   | DefGw_3_ETH_PI                | 0     | num  | 0       | 0   | 255 | Default Gateway (3 rd part)   |
| 15805   | DefGw_4_ETH_PI                | 1     | num  | 1       | 0   | 255 | Default Gateway (4 th part)   |
| 15806   | NetMask_1_ETH_PI              | 255   | num  | 255     | 0   | 255 | Net mask (1 st part)  |
| 15807   | NetMask_2_ETH_PI              | 255   | num  | 255     | 0   | 255 | Net mask (2 nd part)  |
| 15808   | NetMask_3_ETH_PI              | 255   | num  | 255     | 0   | 255 | Net mask (3 rd part)  |
| 15809   | NetMask_4_ETH_PI              | 0     | num  | 0       | 0   | 255 | Net mask (4 th part)  |
| 15810   | PrIDNS_1_ETH_PI               | 8     | num  | 8       | 0   | 255 | Primary DNS server (1 st part)  |
| 15811   | PrIDNS_2_ETH_PI               | 8     | num  | 8       | 0   | 255 | Primary DNS server (2 nd part)  |
| 15812   | PrIDNS_3_ETH_PI               | 8     | num  | 8       | 0   | 255 | Primary DNS server (3 rd part)  |
| 15813   | PrIDNS_4_ETH_PI               | 8     | num  | 8       | 0   | 255 | Primary DNS server (4 th part)  |
| 15814   | SecDNS_1_ETH_PI               | 8     | num  | 8       | 0   | 255 | Secondary DNS server (1 st part)  |
| 15815   | SecDNS_2_ETH_PI               | 8     | num  | 8       | 0   | 255 | Secondary DNS server (2 nd part)  |
| 15816   | SecDNS_3_ETH_PI               | 4     | num  | 4       | 0   | 255 | Secondary DNS server (3 rd part)  |
| 15817   | SecDNS_4_ETH_PI               | 4     | num  | 4       | 0   | 255 | Secondary DNS server (4 th part)  |
| 15818   | EnableDHCP_ETH_PI             | False | flag | False   | 0   | 1   | Enable DHCP   |
| 16130   | MAC_1_ETH_PI                  | 0     | num  | 0       | 0   | 0   | MAC address (1 st part)   |
| 16131   | MAC_2_ETH_PI                  | 24    | num  | 24      | 0   | 24  | MAC address (2 nd part)   |
| 16132   | MAC_3_ETH_PI                  | 187   | num  | 187     | 0   | 187 | MAC address (3 rd part)   |
| 16133   | MAC_4_ETH_PI                  | 0     | num  | 0       | 0   | 255 | MAC address (4 th part)   |
| 16134   | MAC_5_ETH_PI                  | 0     | num  | 0       | 0   | 255 | MAC address (5 th part)   |
| 16135   | MAC_6_ETH_PI                  | 0     | num  | 0       | 0   | 255 | MAC address (6 th part)   |
| 16146   | MbMTcp_Serverip4thOctet_Node0 | 0     | num  | 0       | 0   | 255 | Modbus TCP Client via Configuration: 4th octet for server node number 0 |
| 16147   | MbMTcp_Serverip4thOctet_Node1 | 0     | num  | 0       | 0   | 255 | Modbus TCP Client via Configuration: 4th octet for server node number 1 |
| 16148   | MbMTcp_Serverip4thOctet_Node2 | 0     | num  | 0       | 0   | 255 | Modbus TCP Client via Configuration: 4th octet for server node number 2 |
| 16149   | MbMTcp_Serverip4thOctet_Node3 | 0     | num  | 0       | 0   | 255 | Modbus TCP Client via Configuration: 4th octet for server node number 3 |
| 16150   | MbMTcp_Serverip4thOctet_Node4 | 0     | num  | 0       | 0   | 255 | Modbus TCP Client via Configuration: 4th octet for server node number 4 |
| 16151   | MbMTcp_Serverip4thOctet_Node5 | 0     | num  | 0       | 0   | 255 | Modbus TCP Client via Configuration: 4th octet for server node number 5 |
| 16152   | MbMTcp_Serverip4thOctet_Node6 | 0     | num  | 0       | 0   | 255 | Modbus TCP Client via Configuration: 4th octet for server node number 6 |
| 16153   | MbMTcp_Serverip4thOctet_Node7 | 0     | num  | 0       | 0   | 255 | Modbus TCP Client via Configuration: 4th octet for server node number 7 |

- Implementation of SDO read in IEC61131-3 programming: added the following embedded function:
  - sysCOPM\_Sdo\_UploadRequest

**Function: sysCOPM\_Sdo\_UploadRequest (ver.1.0.0, EMBEDDED )**

Creation date: ...

Last modified date: ...

Return Value: UDINT

Input:

| Name   | Type  | Description                        |
|--------|-------|------------------------------------|
| hdlr   | UDINT | SDO Handle                         |
| node   | USINT | CanOpen Address Node               |
| index  | UINT  | Object index                       |
| sindex | USINT | Object sub-index                   |
| data   | UDINT | memory address of read data buffer |
| len    | UINT  | Object data len 1...4 [byte]       |
| to     | UDINT | Time out [ms]                      |

Description:

Send a SDO read object to a remote CanOpen node.

This function has to be invoked in the Background task.  
It can be used only if controller is configured as CanOpen Master.

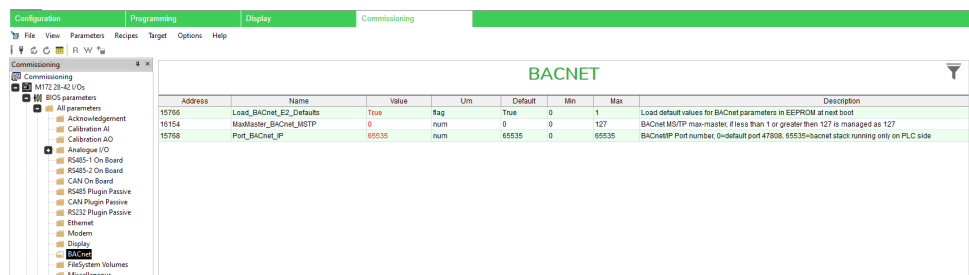
Note: hdlr input is the output of the function sysCOPM\_Sdo\_OpenChn().

It returns the len of the received message if SDO has been sent correctly, the error codes are:

- SDO\_E\_TGBIT 0x05030000 Toggle bit not alternated
- SDO\_E\_TMO 0x05040000 SDO protocol timed out
- SDO\_E\_CSC 0x05040001 Client/server command specifier not valid or unknown
- SDO\_E\_BCKS 0x05040002 Invalid block size (block mode only)
- SDO\_E\_SEQN 0x05040003 Invalid sequence number (block mode only)
- SDO\_E\_CRC 0x05040004 CRC error (block mode only)
- SDO\_E\_OUTM 0x05040005 Out of memory
- SDO\_E\_UNACC 0x06010000 Unsupported access to an object
- SDO\_E\_WRONGLY 0x06010001 Attempt to read a write only object
- SDO\_E\_RDONLY 0x06010002 Attempt to write a read only object
- SDO\_E\_NOOBJ 0x06020000 Object does not exist in the object dictionary
- SDO\_E\_MAPOBJ 0x06040041 Object cannot be mapped to the PDO
- SDO\_E\_EXCPDO 0x06040042 The number and length of the objects to be mapped would exceed PDO length
- SDO\_E\_PARINC 0x06040043 General parameter incompatibility reason
- SDO\_E\_GENINC 0x06040047 General internal incompatibility in the device
- SDO\_E\_HWERR 0x06060000 Access failed due to an hardware error
- SDO\_E\_OBJLEN 0x06070010 Data type does not match, length of service parameter does not match
- SDO\_E\_TOOHG 0x06070012 Data type does not match, length of service parameter too high
- SDO\_E\_TOOWLW 0x06070013 Data type does not match, length of service parameter too low
- SDO\_E\_NOSI 0x06090011 Sub-index does not exist
- SDO\_E\_RANGE 0x06090030 Value range of parameter exceeded
- SDO\_E\_LIMHG 0x06090031 Value of parameter written too high
- SDO\_E\_LIMLW 0x06090032 Value of parameter written too low
- SDO\_E\_HGLW 0x06090036 Maximum value is less than minimum value
- SDO\_E\_GENERIC 0x08000000 General error
- SDO\_E\_TRANSF 0x08000020 Data cannot be transferred or stored to the application
- SDO\_E\_TRANSFLOC 0x08000021 Data cannot be transferred or stored to the application because of local control
- SDO\_E\_TRANSFSTAT 0x08000022 Data cannot be transferred or stored to the application because of the present device state
- SDO\_E\_OBJDICT 0x08000023 Object dictionary dynamic generation fails or no object

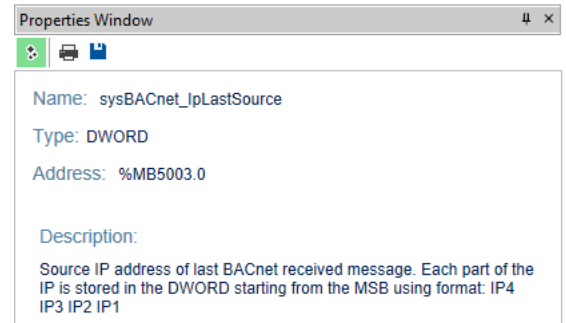
Introduced new BIOS parameters 16154 MaxMaster\_BACnet\_MSTP to enable BACnet protocol to modify by parameter max-master property. If 16154 value is 0 or greater than 127 then max-master is forced to 127, otherwise max-master is the value of 16154 parameter

Below the new parameter in BIOS parameters\All parameters\BACnet folder

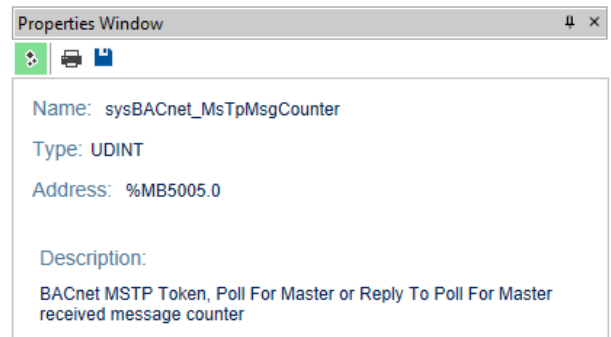




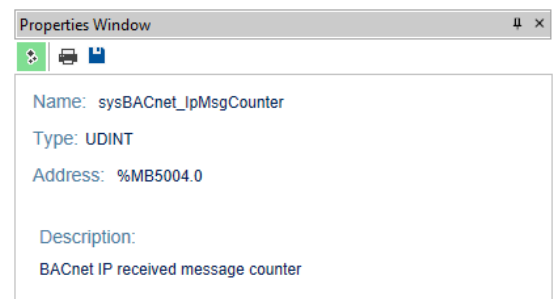
- Introduced Target Data Blocks that counts the number of BACnet IP and BACnet MS/TP messages for the controller. In case of BACnet IP is also stored the IP address of the last message received:
  - sysBACnet\_IpLastSource AT %MB5003.0: DWORD;
    - { DE:"Source IP address of last BACnet received message. Each part of the IP is stored in the DWORD starting from the MSB using format: IP4 IP3 IP2 IP1" }



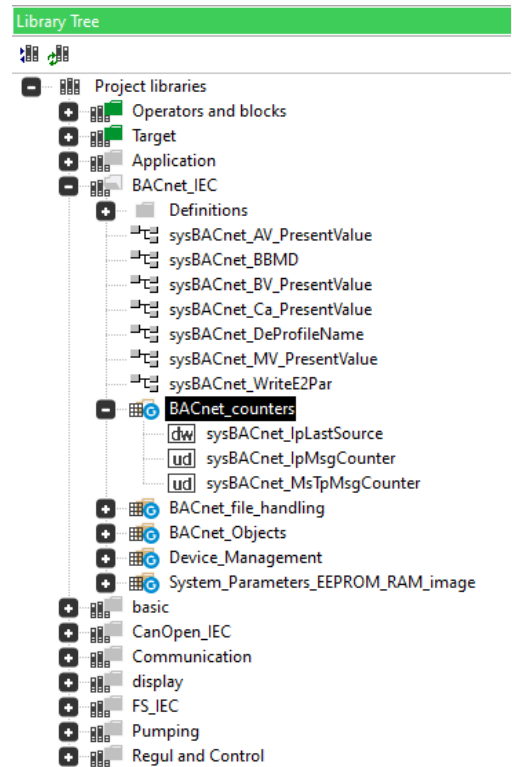
- sysBACnet\_IpMsgCounter AT %MB5004.0: UDINT;
  - { DE:"BACnet IP received message counter" }



- sysBACnet\_MsTpMsgCounter AT %MB5005.0: UDINT;
  - { DE:"BACnet MSTP Token, Poll for Master or Reply to Poll for Master received message counter" }



Below the new Target Data Blocks folder in BACnet\_counters



## NEW FEATURES IN EVE7500 (FIRMWARE MSK 460.04)

Support of new internal memories chipset, no modification in users features.

## Mitigated Anomalies

AVD126●●, AVC126●●, AVD84●●, AVC84●●/ AVD62●●, AVC62●●, AVD30●●, AVC30●● (FIRMWARE MSK 596.13 AND MSK 668.13)

Solved the following issue:

- WD:0 caused by a reading of 125 registers in Modbus TCP/RTU Slave mode in some situations
- If controller asks a string from display part with @PLC notation to a slave, the requested frame has only 16 chars not the real length of the string
- To reduce network load on BACnet, the default value of the COV for BACnet Object Analog should be set different from 0. Now it is set to 1.175494351e-38F.
- Increase ARP table dimension. Now it has been extended at 32 devices at same time.
- If there are Modbus RTU Client communication in Configuration and in Background we have some communication lost because wait before send used in Background doesn't take in account messages in Configuration.

To solve this a new Target DataBlock has been realized to set a wait-before-send time between this kind of messages.

- `sysMbMRtuWaitBeforeSendBck AT %MB5002.0 : UINT; { DE: "Wait before send time used by functions sysMbMRTU_FCxx(), value is lower limited to 50 [ms]" }`
- located in Target variables\Modbus\_Master:

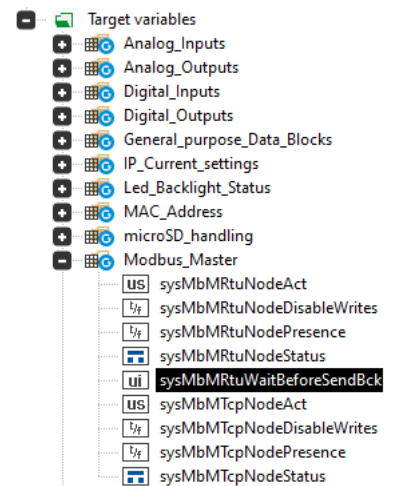
Name: `sysMbMRtuWaitBeforeSendBck`

Type: `UINT`

Address: `%MB5002.0`

Description:

Wait before send time used by functions `sysMbMRTU_FCxx()`, value is lower limited to 50 [ms]



- Handled use case with selection order equal to 0
- Modbus TCP/RTU Client doesn't stop during download.

EVD75●●/ EVC75●● (FIRMWARE MSK 423.29 & MSK 477.29)

Requesting string chars not complete with @ syntax

FREE Studio Plus1.3.0 - Edit object is showed with # char for %0x

Avoid selection order duplication

Solved the following issues:

- If controller asks a string from display part with @PLC notation to a slave, the requested frame has only 16 chars not the real length of the string
- Edit object is showed with # char for %0x
- Handled use case with selection order equal to 0

EVP3●● (FIRMWARE MSK 489.23)

Solved the following issue:

- Push buttons inoperable in diagnostic menu mode

EVP3●● (FIRMWARE MSK 489.22) (Intermediate release)

Requesting string chars not complete with @ syntax

FREE Studio Plus1.3.0 - Edit object is showed with # char for %0x

Avoid selection order duplication

Solved the following issues:

- If controller asks a string from display part with @PLC notation to a slave, the requested frame has only 16 chars not the real length of the string
- Edit object is showed with # char for %0x
- Handled use case with selection order equal to 0

EVK1000 (FIRMWARE MSK 476.23)

Solved the following issue:

- If Push buttons inoperable in diagnostic menu mode

EVK1000 (FIRMWARE MSK 476.22) (Intermediate release)

Requesting string chars not complete with @ syntax

FREE Studio Plus1.3.0 - Edit object is showed with # char for %0x

Avoid selection order duplication

Solved the following issues:

- If controller asks a string from display part with @PLC notation to a slave, the requested frame has only 16 chars not the real length of the string
- Edit object is showed with # char for %0x
- Handled use case with selection order equal to 0
- Wrong FDI\_Frequency of FDI\_counter: FDI\_Frequency value is now automatically set at value 0 only if the signal applied to FDI pin is stable (high or low) for at least 10 seconds

AVP1●●● (FIRMWARE MSK 659.09)

Requesting string chars not complete with @ syntax

Solved the following issue:

- If controller asks a string from display part with @PLC notation to a slave, the requested frame has only 16 chars not the real length of the string

EVEVD1U000500 (FIRMWARE MSK 772.01)

Solved the following issue:

- Fixed issue in case of short circuit Can Bus alarm
- Correct alarm management

EVEVD●B000500 (FIRMWARE MSK 766.01)

Solved the following issue:

- Fixed issue in case of short circuit Can Bus alarm

## Firmware downgrade

Limited to EVD75●●/EVC75●●/EVP3●● and AVK1000/EVK1000 references, a firmware downgrade to a version earlier than the factory default may cause the device to malfunction, due to incompatibility of old firmware with some electronic components used at the time of production.

Based on the production week printed on product label, following tables show the earliest FW version to which products can be downgraded:

| Production week (EVD7500)   | Earliest downgradable version |
|-----------------------------|-------------------------------|
| WK31/22 or later            | MSK423.29 (*)                 |
| Between WK08/19 and WK30/22 | MSK423.27                     |
| Between WK24/13 and WK07/19 | MSK423.16                     |
| Before WK24/13              | Any version                   |

| Production week (EVC7500)   | Earliest downgradable version |
|-----------------------------|-------------------------------|
| WK31/22 or later            | MSK477.29 (**)                |
| Between WK08/19 and WK30/22 | MSK477.27                     |
| Between WK24/13 and WK07/19 | MSK477.16                     |
| Before WK24/13              | Any version                   |

| Production week (AVK1000/EVK1000) | Earliest downgradable version |
|-----------------------------------|-------------------------------|
| WK31/22 or later                  | MSK476.22 (***)               |
| Between WK08/19 and WK30/22       | MSK476.20                     |
| Between WK30/14 and WK03/19       | MSK476.11                     |
| Before WK30/14                    | Any version                   |

| Production week (EVP3300)   | Earliest downgradable version |
|-----------------------------|-------------------------------|
| WK31/22 or later            | MSK489.22 (****)              |
| Between WK08/19 and WK30/22 | MSK489.20                     |
| Between WK30/14 and WK03/19 | MSK489.11                     |
| Before WK30/14              | Any version                   |

(\*) Only if factory FW version is 423.29 or greater

(\*\*) Only if factory FW version is 477.29 or greater

(\*\*\*) Only if factory FW version is 476.22 or greater

(\*\*\*\*) Only if factory FW version is 489.22 or greater

Please contact Technical Customer Support for confirmation

# Software Information

## New Features

### FREE Studio Plus

- Installer Pro Project. Perspective Configuration, menu Project/Options. For more details see user guide Chapter Installer Pro Project
- TelevisDriver generation. Perspective Configuration, menu Project/Options. For more details see Chapter Televis Driver Generation.
- Added dictionaries for defined / custom description of parameters and status variable
- Added language selection for parameters and status variable description in the Language / Program option Menu
- Bios download: added a control on the target name
- Added Installer Access Level for parameters and status variable in Configuration
- Faster data refresh/update from Commissioning and Installer
- Commissioning :
  - Removed the command "Write Televis Parameters Value"
  - The command "Generate Parameter File" now generate a csv file in conjunction with the Param.dat
  - Added the command "Generate USB file on target" to force the target to create the files Param.dat and Param.bin on the connected USB stick
  - Added to the command "Import parameter file" the option to create a receipt with the imported parameters
- Catalog updated with the target EWCM 9000 Pro
- Added EWCM 9000 Pro user guide
- Possibility of importing objects Modbus (EEPROM Parameters, Status Variables, etc.) from an Excel file
- Add possibility to select Modbus/Jbus in Modbus Custom Editor
- Add new command line option for "build all" in EWApplication (possibility to BuildAll the project in automatic mode; command line: \BATCHBUILDALL).
- Add an option to select value parameter for Param.bin
- Add pre-compilation options (extension to IEC standard): if this option is checked, IFDEF feature is enabled (you can allow build of portion of code verifying if a certain symbol has been defined).
- Add a filter to export default of BIOS parameter
- Remove Registration License Manager
- Improved code generation and warning handling

- New algorithm for calculation of POU dependencies: better handling of dependencies between POUs and data types, to avoid unnecessary compilation of unused blocks
- Complex conditions (AND, OR, NOT) for IFDEF directive
- Introduced Verbose warning mode
- Possibility to exclude PLC objects from build explicitly
- IEC textual declaration for structures, typedefs, enums, subranges
- Init value of function variables: it is now possible to both explicitly initialize local variables of functions(x86 only), and to initialize them to zero by default with a specific option
- New symbols browser window: New docking window with fast searching and browsing of all the project symbols
- Custom sort of project folders: checking this option will enable Move Up and Move Down command in the context menu of the folder, in the project tree.
- Unused variables reports: An XML report, with dedicated view, to track all unused global variables of the project.
- Use legacy LD editor: the new Ladder Diagram editor is easier to use, by helping you in common operations working on the diagram will be faster and more efficient. Note that, by default, this option is disabled; enabling it will allow the use of the old LD editor.
- Skip duplicate objects in libraries: It is now possible to use a library that has duplicate object names with respect to the current project, they will be automatically skipped
- Libraries directories: Instead of adding libraries one-by-one, a list of folders containing all libraries to load can be specified.
- Operators, standard blocks and target blocks on library view:
  - "Operators and blocks" window has been removed, and its contents are now shown in the "Library tree" window, in two new folders, called "Operators and blocks" and "Target"
- Support for VAR\_EXTERNAL also in functions: As for IEC standard, VAR\_EXTERNALs are now also supported in functions (previously only on function blocks).
- PVOID pointer type: New generic PVOID type, to avoid warnings and allow architecture-independent pointers;
- Internal rework of symbol names when "case sensitivity=false": Symbol names are not made all uppercase anymore, so they preserve their original case in watch, output, symbol browser, and so on

### Installer

- PLC navigation tree, IO Definition, SoftScope automatically added to the PLC menu
- Menu Access Level management

## Mitigated Anomalies

Solved the following issues:

- Simulation of target EWCM 9000 Pro
- Improved Parameters Export to txt file from Commissioning
- Improved filters in Print Setting from Commissioning
- Improved Print Preview from Configuration and from Installer
- Better spacing on FBD blocks for long name
- Change variable order watch not run with keyboard command
- In FBD selection should be removed when clicking outside the editor.
- An edit object is showed with # if format is %0x in Display for FREE Evolution/FREE Advance while in FREE Advance is correct.
- Save all value of IO pin and exported register for a simulator instance in order to have last situation of environment.
- Add EWP2\_6x8 chars i, i.
- Check related the maximum number of EEV driver valve as slave CanOpen (maximum number admitted:4).
- Long press of Simulator keys generates twice press Event.
- CTRL+Z while execution is paused.
- The Drag and Drop for menu don't work for FREE Advance 4 DIN.
- Correct Error in compilation for variables used with @notation.
- Bug Icon image in FB not saved when export in library.
- Wrong position of popup input output window in FBD prog.
- No autoscroll during text selection using mouse.
- Wrong concomitants COM connection.
- Disable Download all in Installer with XVD.
- Add recipe command not good for FREE Smart.
- Crash if simulator is disabled during build.
- Data Export command in configuration doesn't export any menu selected.
- Missing data when a filter is used in a recipe.
- Pointers to Digital Input not always run well.
- Not possible to insert blanks into note field in SV.
- Simulator shows string variables partially.
- In live debug mode when we go inside a function after some value is shown a WDT reset occurs.
- Display: Ctrl+C and Ctrl+V should be work for paste text in Edit.
- If FREE Advance ask a string from display part with @PLC notation to a slave, the requested frame has only 16 chars not the real length of the string.



- Add a checking about Modbus message, sending and error if Modbus RTU are over 512 or Modbus TCP are over 128, for FREE Advance controller.
- TelevisGo: HTML pages should be updated with new FSP style
- Bad behavior of Multiple files project option.
- Error on updating commands of import bitmaps/fonts.
- Correct initialization of a local array inside FB when first element is 0.
- Wrong definition of data if offset is 1.
- In the compilation error of wrong usage of bitwise it is specified data type like BYTE, WORD and DWORD.
- Not possible to un-install application while it is running.
- Un-installation of FREE Studio Plus does not remove the directory files completely.
- Setup should check low Disk Space
- Folder Virtual store after un-installation now is empty.
- Setup must check OS version.
- ActiveX Vulnerability fix CVE-2016-4529
- Introduced DLL sign check to prevent dll hijacking.
- New version of HVAC Application library (1.3.4) with updates in the following AFBs due to alignment new algorithm compiler 1.5.1:
  - OperatingHours (1.0.1)
  - COPCalculation (1.0.1)
  - CompCntrl\_VS (1.1.3)
  - EEVDCntrl (1.0.5)
  - EEVDShCntrl (1.0.5)
  - EEVDAlarmMgmt (1.0.2)
  - EEVDSettingsU (1.1.4)
  - EEVDSettingsB (1.1.4)
  - AHUTempCntrlStrategy (1.0.2)
  - New version of HVAC Regul and Control library (1.1.4) with updates in the following AFBs due to alignment new algorithm compiler 1.5.1:
    - WeekSchedule (1.0.2)
- New version of Baseline due to alignment new algorithm compiler 1.5.1:
  - FSP\_PrecisionAirConditioner (1.1)
- Error in calculation of Modbus registers for 412 and 542 targets
- PAR\_VIS and PAR\_ADR functions can't be compiled on local procedures

- Error in creation of param.bin file on projects with target 596 and 668 with version minor or equal of 12

## Known Operational Anomalies

The navigation through Sets elements on a page with an Edit object with Selection order property equal to 0 doesn't work properly.

# Additional Information

## Release Notes History

### Release Notes FREE Studio Plus v1.4.1.0

Sixth Release

### Release Notes FREE Studio Plus v1.4.0

Fifth Release

### Release Notes FREE Studio Plus v1.3.0

Fourth Release

### Release Notes FREE Studio Plus v1.2.1

Third Release

### Release Notes FREE Studio Plus v1.2

Second Release

### Release Notes FREE Studio Plus v1.1

First Release

## New Features Hardware/Firmware v1.4.1.0

NEW PRODUCT EPBIIFCTA500 (FIRMWARE MSK 644.05)

- Target for EWCM 9000 PRO (HF) dedicated to CO2 transcritical booster compressors rack solution.

NEW FEATURES in EPBIIFCTA500 (FIRMWARE MSK 644.05)

- Cybersecurity Improvement:
  - Ethernet connectivity, except for ping command, is disabled until the default web password is changed from local display or FREE Studio Plus
  - After password change, a reboot is required to enable ethernet connectivity.

## Mitigated Anomalies Hardware/Firmware v1.4.1.0

- EPBIIFCTA500
- (FIRMWARE MSK 644.05)

Solved the following issue:

- Error selecting the HMI language

## New Hardware/Firmware v1.4.0 Features

- AVD126II/ AVC126II/ AVD84II/ AVC84II
- AVD62II/ AVC62II/ AVD30II/ AVC30II

(FIRMWARE MSK 596.12 AND MSK 668.12)

- AVD●● - Make sysUART\_Reinit flush the buffer

NEW PRODUCT AVK1000 (FIRMWARE MSK 476.21)

## Mitigated Anomalies Hardware/Firmware v1.4.0

AVD126●●/ AVC126●●/ AVD84●●/ AVC84●●

AVD62●●/ AVC62●●/ AVD30●●/ AVC30●●

(FIRMWARE MSK 596.12 AND MSK 668.12)

Solved the following issue:

- Rebooting reading Modbus address 65535 in Modbus RTU and TCP protocol
- Analog Input (Alx) used like Digital Input (DI) does not ignore calibration parameter Cfg\_Alx
- Communication via Modbus RTU Client is lost with a fault using XVD as server
  - Improved Implementation of Modbus Protocol for the management of repeated response from slaves.
- In case of micro-SD corrupted controller resets continuously
  - After a reset for a WDT:8, the device restarts not allowing automatic or manual mounting, until microSD is removed and put back, or replaced. If another corrupted microSD is inserted there will be a WDT:7 error.

EVK1000 (FIRMWARE MSK 476.21)

Solved the following issues:

- Wrong management of long enumerative with over than 258 items.
- If multiple resets occur due to problems loading the HMI, it is not possible to enter DIAGNOSTIC menu
  - In case of WDT restart, the DIAGNOSTIC menu will be executed. If within ten seconds no actions are done the HMI starts automatically.

EVP3●● (FIRMWARE MSK 489.21)

Solved the following issues:

- Wrong management of long enumerative with over than 258 items.
- Analog Input (Alx) used like Digital Input (DI) does not ignore calibration parameter Cfg\_Alx
- Wrong BACnet values in EEPROM after a boot
- Not able to manage multiple objects subscribes BACnet MSTP
- Communication issue with BACnet MS/TP (BACnet verifies Tusage\_delay and Tusage\_timeout)
- After a getEventInformation BACnet command, controller replies with a too long message and then replies to a wrong MASTER

- Controller doesn't send error when trying to change BACnet PA6
- Multiple subscriptions of BACnet objects might lead a WDT reset

EVD75●●/ EVD75●● (FIRMWARE MSK 423.28 & MSK 477.28)

Solved the following issues:

- Wrong management of long enumerative with over than 258 items.
- Analog Input (Aix) used like Digital Input (DI) does not ignore calibration parameter Cfg\_Aix
- Wrong BACnet values in EEPROM after a boot
- Not able to manage multiple objects subscribes BACnet MSTP
- Communication issue with BACnet MS/TP (BACnet verifies Tusage\_delay and Tusage\_timeout)
- After a getEventInformation BACnet command, controller replies with a too long message and then replies to a wrong MASTER
- Controller doesn't send error when trying to change BACnet PA6
- Multiple subscriptions of BACnet objects might lead a WDT reset

AVP1●●● (FIRMWARE MSK 659.08)

Solved the following issues:

- Sometimes there is a "Download application failure"
- Few installed devices have shown string visualization problem

## New Hardware/Firmware v1.3.0 Features

NEW EVEVD1U000500/ EVEVD●B000500 (FIRMWARE MSK 772.00 AND MSK 766.00)

- New EVEVD Expansions to drive 1 Unipolar Electronic Expansion Valve or up to 2 Bipolar Electronic Expansion Valves

NEW FEATURES IN AVD126●●/ AVC126●●/ AVD84●●/ AVC84●●

(FIRMWARE MSK 596.11 AND MSK 668.11)

- Reconfiguration Master to Slave on RS485-2 from IEC code:
  - if Modbus register 16145 is set different from 0 and MbMRtu\_IsDisByPar function is present before MbMRtu\_OpenChn function in CONNEC.PAR file then Modbus Master is disabled and Modbus Slave is enabled
- Improvement to decrease boot time due to CAN device missing:
  - if Modbus register 16144 is set different from 0 and COPM\_SlavePresenceByPar function is present before COPM\_SlaveAssignfunction in CONNEC.PAR file then master controller skips initialization of the CAN expansion indicated in register 16144 as follows:
    - register 16144 bit0 : if 0 the 1st CAN slave in CONNEC.PAR sequence is present otherwise it is not present
    - register 16144 bit1 : if 0 the 2nd CAN slave in CONNEC.PAR sequence is present otherwise it is not present

- ...
- register 16144 bit11 : if 0 the 11th CAN slave in CONNEC.PAR sequence is present otherwise it is not present
  
- Extension to negative value for web select objects:
  - <select> range is now from -999 to 9999
  
- Improved not changing IP address on fly:
  - Whenever a parameter from 15798 to 15817 is written, a timeout of 30 seconds is loaded. This timeout delays reload of ETH settings
  
- New target Data Block to prevent reading executable application:
  - introduced BOOL MEMO Data Block 5001.0 : if FALSE then \*.COD files can be opened by FTP or virtual FTP otherwise not (\*.COD files can't be opened by FTP and virtual FTP)

#### NEW FEATURES IN SM●●●●● (FIRMWARE MSK 542.10)

- Modbus protocol available on COM0 (LAN)
- Modbus master available on COM0 (LAN)
- Added parameters CF35, CF36, CF37 to set protocol on COM0
- CF00 change of range to select protocol on COM0
- Added parameter CF39 to select which COM port is enabled for Modbus master
- Preset of parameters CF35, CF36, CF37, CF39 at default values to permit to program old devices without updating EEPROM map

#### NEW FEATURES IN SM●●●●● (FIRMWARE MSK 412.21)

- Modbus protocol available on COM0 (LAN)
- Added parameters CF35, CF36, CF37 to set protocol on COM0
- CF00 change of range to select protocol on COM0
- Preset of parameters CF35, CF36, CF37 at default values to permit to program old devices without updating EEPROM map

## Mitigated Anomalies Hardware/Firmware v1.3.0

#### NEW FEATURES IN AVD126●●/ AVC126●●/ AVD84●●/ AVC84●●

(FIRMWARE MSK 596.11 AND MSK 668.11)

Solved the following issues:

- recognize only first USB key plugged after a boot only the first USB key is recognized when plugged in after a boot
- FTP Command Timeout changed from 10 to 30 seconds
- input Web server authentication always active in iOS
- when removing files using FTP, a WDT reset occurs
- Green led ON before end of download via USB key
- After a getEventInformation BACnet command, controller replies with a too long message
- When a BMS tries to change PA6 for BACnet AV the controller should reply with a write-access denied and not change PA15
- Communication issues with BACnet MS/TP, BACnet verifies Tusage\_delay and Tusage\_timeout
- FREE Advance WDT0 resets at power on

## SM●●●●● (FIRMWARE MSK 542.10 AND MSK 412.21)

Solved the following issues:

- Improved serial communication

## New Features Hardware/Firmware v1.2.1

### NEW FEATURES IN AVD126●●/ AVC126●●/ AVD84●●/ AVC84●●

#### (FIRMWARE MSK 596.10 AND MSK 668.10)

- For reasons of Internet security:
  - Modbus TCP / BACnet IP / FTP are disabled by default. Therefore Modbus TCP / BACnet IP / FTP have to be manually enabled.
  - The following Target functions has new added return codes:
    - sysHTTP\_AuthentGuest()
    - sysHTTP\_Authentication()
    - sysFTP\_AuthentGuest()
    - sysFTP\_Authentication()
- Increased number of Modbus TCP Client from 3 to 8
- Increased number of registers from 16 to 20 for the following Modbus on event functions:
  - sysMbMRTU\_FC03()
  - sysMbMRTU\_FC01()
  - sysMbMRTU\_FC02()
  - sysMbMRTU\_FC04()
  - sysMbMRTU\_FC15()
  - sysMbMRTU\_FC16()
- Introduced the following Target variables to count the number of Modbus message received on the relate serial port:
  - sysMODBUS\_msg\_received\_USB AT %MD5000.0 :  
UDINT;{ DE:"Counter for modbus message received on USB-device" }
  - sysMODBUS\_msg\_received\_RS485-1 AT %MD5000.1 :  
UDINT;{ DE:"Counter for modbus message received on RS485-1" }
  - sysMODBUS\_msg\_received\_RS485-2 AT %MD5000.2 :  
UDINT;{ DE:"Counter for modbus message received on RS485-2" }
  - sysMODBUS\_msg\_received\_RS485-Plugin AT %MD5000.3 :  
UDINT;{ DE:"Counter for modbus message received on RS485/232 Plugin" }
- Modified in Read Only the MAC address
- Introduced Target function sysLocalADCs\_Fast() to read scaled Analog to Digital Converters values to be able to handle a faster read of Analog Inputs configured as Digital Inputs
- Introduced Target function sysUART\_Reinit() to modify run-time UARTs settings using sysUART\_getbuf() and sysUART\_putbuf() Target functions
- Introduced Baud Rate at 2400b/s for sysUART Target functions

#### NEW FEATURES IN XVD (FIRMWARE MSK 589.20)

- Implemented Unipolar Valves driving for Parker-Sporlan CEV models

## Mitigated Anomalies Hardware/Firmware v1.2.1

NEW FEATURES IN AVD126●●/AVC126●●/AVD84●●/AVC84●●

(FIRMWARE MSK 596.10 AND MSK 668.10)

Solved the following issue:

- Additional 0xCC character received in sysUART\_getbuff() Target function
- After several copy of a file from microSD to USB-host controller reset

AVP1●●● (FIRMWARE MSK 659.07)

Solved the following issues:

- sysMbMRTU\_FC03() Target function does not include all error cases
- When a page change it is visible a display flickering

XVD (FIRMWARE MSK 589.20)

Solved the following issues:

- when change MOP setpoint (SP3) Driver must be reset to have new setting active.

## New Features Hardware/Firmware v1.1

NEW FEATURES IN AVD●●●●/AVC●●●● (FIRMWARE MSK 596.09 AND MSK 668.09)

- Introduced target functions sysHTTP\_AuthentOnOff() and sysFTP\_AuthentOnOff() to disable/enable authentication (enabled by default)
- Introduced two new SNVTs for LONWOKS protocol:
  - SNVT\_setting
  - SNVT\_state
- Introduced target function sysLcd\_RotateAt180( mode ) to rotate display visualization. Keys work accordingly to mode value: TRUE=rotation at 180°, FALSE=default visualization

## Mitigated Anomalies Hardware/Firmware v1.1

AVD●●●●/AVC●●●● (FIRMWARE MSK 596.09 AND MSK 668.09)

Solved the following issues:

- microSD mount at startup that lock the controller. Fixed max timeout of 30 seconds to mount a volume
- AVD126●●/AVD84●● models continuously reset at power-on if powered only via USB-device.
- Not able to manage multiple objects subscribes BACnet MSTP

AVP1●●● (FIRMWARE MSK 659.06)

Solved the following issues:

- Not possible to enter edit mode with Enums
- Bad navigation between different enumerative
- Editing of INT with format XXX.Y doesn't work if you try to enter values between 0.1 and 0.9
- Not possible to send broadcast messages
- String writing by commissioning using USB port is not correct



## New Features Software v1.4.1.0

### FREE Studio Plus

- Installer Pro Project. Perspective Configuration, menu Project/Options. For more details see user guide Chapter Installer Pro Project
- TelevisDriver generation. Perspective Configuration, menu Project/Options. For more details see Chapter Televis Driver Generation.
- Added dictionaries for defined / custom description of parameters and status variable
- Added language selection for parameters and status variable description in the Language / Program option Menu
- Bios download: added a control on the target name
- Added Installer Access Level for parameters and status variable in Configuration
- Faster data refresh/update from Commissioning and Installer
- Commissioning :
  - Removed the command “Write Televis Parameters Value”
  - The command “Generate parameters file” now generate a csv file in conjunction with the Param.dat
  - Added the command “Export parameter files from target to USB” to force the target to create the files Param.dat and Param.bin on the connected USB stick
  - Added to the command “Import parameters files” the option to create a receipt with the imported parameters
- Catalog updated with the target EWCM 9000 Pro
- Added EWCM 9000 Pro user guide

### Installer

- PLC navigation tree, , IO Definition, SoftScope automatically added to the PLC menu
- Menu Access Level management

## Mitigated Anomalies Software v1.4.1.0

- Solved the following issues:
  - Simulation of target EWCM 9000 Pro
  - Improved Parameters Export to txt file from Commissioning
  - Improved filters in Print Setting from Commissioning
  - Improved Print Preview from Configuration and from Installer

## Known Operational Anomalies v1.4.1.0

NONE

## New Features Software v1.4.0

- New “Templates” section added to the program landing page and in the File menu
- Improvement of pages navigation for HMI menus created through Display tab. “Close page and back” function is now always available.
- Library of images is now available in Display
- Improved functions to create and configure HMI Project profiles.

- FREE Advance - Reconfiguration Master/Slave RS485-2 from IEC code
- New features in AFB Communication library:
  - ATV320ModbusCom
  - ATV320ModbusTcpCom
  - ATV630ModbusCom
  - ATV630ModbusTcpCom
  
- EBMpapst ModbusCom library:
  - EBMFanOperation
  - EBMReset
  - EBMSetFanAddress
  - EBMStatusInfo
  
- EC Blue Basic ModbusCom library:
  - ECBlueBasicCMODE
  - ECBlueBasicCOMerrWTD
  - ECBlueBasicErrorStatus
  - ECBlueBasicInfoOpCd1
  - ECBlueBasicLimit
  - ECBlueBasicMotorReset
  - ECBlueBasicRampTiming
  - ECBlueBasicSetFanAddress
  - ECBlueBasicSetFixedSpeed
  - ECBlueBasicSetIO
  - f\_ECBlueBasicControlWEn
  - f\_ECBlueBasicControlWFull
  - f\_ECBlueBasicMotorCurrent
  - f\_ECBlueBasicSpeedCtrl
- New baseline Precision Air Conditioner (1.0)
- New baseline Air Handling Unit (1.28.1)

## Mitigated Anomalies Software v1.4.0

- Solved the following issues:
  - Improve to copy set or string or enum table for HMI
  - EVEVD /FREE Studio Plus - BIOS update download failure
  - Hidden unsupported operators in simulation mode
  - FREE Advance - Improvement to decrease boot time due CAN device missing
  - Refactoring is not propagated to display part
  - Wrong IEC code for FREE Smart and a modbus custom driver
  - Error in sysWritePar\*() functions if value input is an Eeprom parameter if value arrive from Eeprom parameter
  - EVK1000 - Bug with a long enumerative (over 258 items)
  - Bug last profile used in display is forgotten
  - CharDimX and CharDimY at 1 like default value
  - Simulator doesn't run in a correct way
  - sys\_USBD\_Command has been implemented in simulator. An embedded function is used to detect the correct task
    - 2 = Command code non valid (in back/init task)
    - 3 = Command not executed; function called into task timed.
  - Misalignment between AP and DE compilation
  - CanOpen\_IEC Library: CanOpen Library properly renamed.
  - Missing CFG\_A01 and CFG\_AO2 in param.bin for FREE Advance 4DIN if USB key creation files is used

- Wrong parameters definition result using scale 1 offset 1
- Write default values does not work
- Warm restart wrongly triggered
- Error generating EDS file when the project name contains unicode characters
- Eeprom parameters are created as read-only with "Add multiple" command.
- Source code becomes changeable during live debug
- "Download all" command in Installer from the upper toolbar causes script error in current HTML page
- A constant cannot be used as array bound on structure field
- Objects cannot be imported from library if custom workspace is disabled
- REAL values are truncated in Televis driver generator.
- Solved the following issues in AFB Application library (1.3.3):
  - CompMgmtVS(1.1.3): Code optimization; internal limitation of rSp based on current available capacity in order to avoid multiple compressor start after an alarm reset; extended range of rMinRange (0.0 is now allowed); redefined the way rReqCapacity is calculated (removed the use of ATAN, COS...in order to avoid calculation error with float); improved second tic calculation xlGetSecondTic; added full alarm ordering in order to avoid bug in case multiple alarms and request decrease at the same time
  - FanMgmt(1.0.2): fixed issues with hyst>=minfrequency; division by 0 prevention; offTimer wrong; removed correction in rPowerSP (1.05)
  - CompCntrl\_VS(1.1.2): Bug fix: l\_uiFreqCalc not updated if l\_iSetpoint>=1000 or <= l\_uiMinFreq
  - EEVDCntrl(1.0.4): Created array aauiEEVCntrlParamsImp to manage Imperial UM with selection; passed q\_iSuperHeat and q\_iEvapTemp, instead of q\_iSuperHeatSI and q\_iEvapTempSI to EEVSHCntrl
  - EEVDCntrl(1.0.4): increased range of i\_iSuperHeatSetp, i\_iMOPSetp, i\_iContModSetp in EEVSHCntrl
  - EEVDCntrl(1.0.4): l\_uiSupHeatSetpMax wrong initialization in FB\_EEVDDynSetpCalc
  - EEVDSettingsU(1.1.3): Load set of parameters just after xEn = TRUE,
  - EEVDSettingsB(1.1.3): Load set of parameters just after xEn = TRUE
  - FloatingHighPresCntrl(1.1.1): Alarms related to Press2Temp independent from update of refrigerants
  - EvapPresCntrl(1.1.1): Alarms related to Press2Temp independent from update of refrigerants
  - AHUTempCntrlStrategy(1.0.1): fixed warning generated with REAL conversion
- Solved the following issues in AFB Regul and Controls library (1.1.3):
  - PIDAdvanced(1.1.0): Dead band behavior modified, dead band high limit removed; PID low limit moved to -100.0
  - OperatingHours(1.0.1): Fixed hours calculation (in case of use in Timed the error was 10%)
- Solved the following issues in AFB Communication library (1.1.0):
  - ATV12ModbusCom(1.0.1), ATV312ModbusCom(1.0.1), ATV31ModbusCom(1.0.1), ATV32ModbusCom(1.0.1), ATV61ModbusCom(1.0.1), ATV71ModbusCom(1.0.1): Bug fix: in init state, changed if condition to go to 'stopping'

## New Features Software v1.3.0

- New command line switched included in batch download (for example retries)

- Possibility to open multiple resources-tree at the same time
- Menu folder shown in Global shared, EEPROM and Status Variables
- Added possibility to create multiple EEPROM and Status variables, similarly to local variables
- Added possibility to comment out Ladder/FBD networks to remove them from the compilation process.
- Libraries now available with direct link to target (msk 668.11 and msk 569.11 only)
- New features in AFB Application library (1.3.2):
- New AFBs EEVDCntrl (1.0.3), EEVSHCntrl (1.0.3), SuperHeatCalc (1.0.1), EEVDAlarmMgmt (1.0.1), CheckCOMAlarm (1.0.1) for EEV application control
- New AFB EEVDSettingsU (1.1.2) for unipolar EEVD management
- New AFB EEVDSettingsB (1.1.2) for bipolar EEVD management
- Added new refrigerants from 13 to 26 and custom refrigerant (255) in Press2Temp (1.1.2) and Temp2Press (1.1.2) AFBs

## Mitigated Anomalies Software v1.3.0

- Solved the following issues:
  - Integrated new Registration Software mechanism to fix artf214353 vulnerability
  - Integrated new Registration Software mechanism to fix a cybersecurity issue that could allow attackers to redirect Schneider Electric Software Update to a malicious Update server.
  - Added find and replace feature for Configuration tab
  - Added Driver Televis generation also for FREE Smart
  - Corrected object property description for FB OverwriteLocaldisplay
  - Bug fix in the closure of FTPGateway
  - XVD : fixed description issue for dE25 and integration of SP and MOP values made available through modbus
  - Bug fix in installation folder
  - Bug fix in firmware upgrade via COM on FREE Advance
  - Speed up FREE Advance boot in case of not connected CAN expansions
  - Bug fix in defining string variable of length 1
  - Bug fix in moving program between tasks
  - Bug fix in window appearance, help online
  - Added dE97 in the catalogue of XVD 3.0
  - Added pre-compilation directive to exclude part of source code from the compilation process
  - Big fix on BIOS Enumerator removal
  - Added Port\_FTP\_PI in PARAM.BIN file
  - Bug fix on compilation error generation if, with custom modbus editor the number of registers exceed the allowed ones
  - Solved the following issues in AFB Application library (1.3.2):
  - Changed low limit of iFixeVal from 0 to -500 in FloatingWaterTempSet (1.1.0)
  - Default values changed for uiLowNoiseMaxFreq, uiFanFreqMin, uiFanFreqMax, uiHysteresis in FanMgmt (1.0.1)
  - Correction of bug: hysteresis implemented for uiArrFreqLimits in CompCntrl\_VS (1.1.1)
  - New inputs for custom refrigerant in Press2Temp for FloatingHighPresCntrl (1.1.0) and EvapPresCntrl (1.1.0)

## New Features Software v1.2.1

- Integrated new SESU 2.3.0.
- Ask to select language during installation
- EULA in Japanese.
- Modbus variables can be exported to an Ecostruxure Operator Machine Expert compatible format
- Target RTC alignment during Download All
- Graphical minor changes on logos and icons
- Live debug function for ST language
- Direct bit mapping with physical location
- Support for direct bit access
- Optimization of watch windows
- Support for dynamic array bound using a symbolic constant
- POU can be saved into separate file to facilitate the integration with version control systems
- Improved RS485 configuration form
- Zoom function in Programming Editor
- Bios Parameters → Add full list in Menu
- Change Filter Icon in Commissioning/Installer
- Cybersecurity best practices adoption (force user to change password at first access and unsecure protocols disabled by default)

## Mitigated Anomalies Software v1.2.1

Solved the following issues:

- Loss of program link when "Multiple files project" is selected
- Loss of the translation of the enumerative defined within Display which have additional languages with respect to the BaseLanguage
- Target EVE6000/EVE10200 do not exit from preoperational status
- Stop download with DMI1003002000 vs Target SM●●●●
- Integrated new Registration Software mechanism to fix artf214353 vulnerability

Solved the following issues in AFB Application library (1.2.2):

- Correction of calculation of dewpoint when its value is below 0 °C in Psychrometric AFB (1.1.0)
- Correction of Bug in saving EEPROM for ThermalPowerCalculation AFB (1.0.1)
- Change description for xCntrlMode in properties of CompMgmt AFB (1.1.0) Correction of bug if all compressors go in alarm state and then go out from alarm state, the enable signal needs to do a transition False-True to have a restart of the compressor manager.
- Correction in CompCntrl\_VS AFB (1.1.0) because it was possible to write outside array of Prelimits.
- Anomalies on FREE Studio Plus by code
- Bug in debug mode: A breakpoint in Debug mode on FB TON gives a WDT reset of controller
- Buttons in raised state are wrongly drawn, exceeding HMI area
- Init String on FREE Advance
- ST editor: multiline IEC comments that contains a ) is not marked as comment
- FC - Improvement security vulnerabilities in HTML5 online help
- Help for application object launch an exception
- Wrong positioning of table row with TVDA .sitetempl file

- Column value of parameter not valorized for FREE Smart
- Error loading LON Custom profile
- Missing typedef variables after importing from library (typedef not imported)
- Batch download without /REBUILDPLC does not work anymore
- When dragging a new block, it cannot be placed at the right place because the code scrolls too fast
- Auto creation EDS file

## New Features Software v1.1

- Localization on dialog forms is now possible

## Mitigated Anomalies Software v1.1

Solved the following issues:

- Function Block QRCodeDisplay launch compiler critical error if used with AVP1●●●.
- Value for RS-485 set in configuration aren't written like default
- Issue with "Modified" state after a "Refresh current target" command
- "Build all" disabled while the HMI project is loading
- File PARAM.BIN is wrong, string termination is missing
- Switching perspective issue
- Add the possibility to download single PLC, HMI and HMI Remote from FREE Studio Plus Installer as with FREE Studio Plus
- EWC.exe: error in the compilation of the project with Chinese characters in the name
- File list (.ini) encoding issue
- Modbus Custom editor: all protocols are not added if driver is modified.
- In Modbus custom editor is not possible to insert modbus register of different type (input, Holding...) with same modbus address
- Code generation error: SFC control variables not found
- Import of FREE Evolution / FREE Panel Blind Project with HMI Remote doesn't function.
- Black tabs in Auto Hide Mode. It's difficult read the name of the window
- A program error for a particular configuration of the group policy
- In simulation mode a breakpoint is reached after the CASE OF and after the ELSE
- Error in print on Ladder project
- Breakpoints used inside inner loop

## Known Operational Anomalies v1.1

- Minor vulnerability fixed on dll hijacking (internal reference artf270287)

**Eliwell Controls s.r.l.**  
Via dell'Industria 15  
32016 Alpago (BL) – Italy  
Phone: +49 0437 386 111  
[www.eliwell.com](http://www.eliwell.com)

As standards, specifications, and designs change from time to time, please ask for confirmation of the information given in this publication.

© 2022 Eliwell. All rights reserved.

9MA10300 Rev. 06



This document has been  
printed on recycled paper

